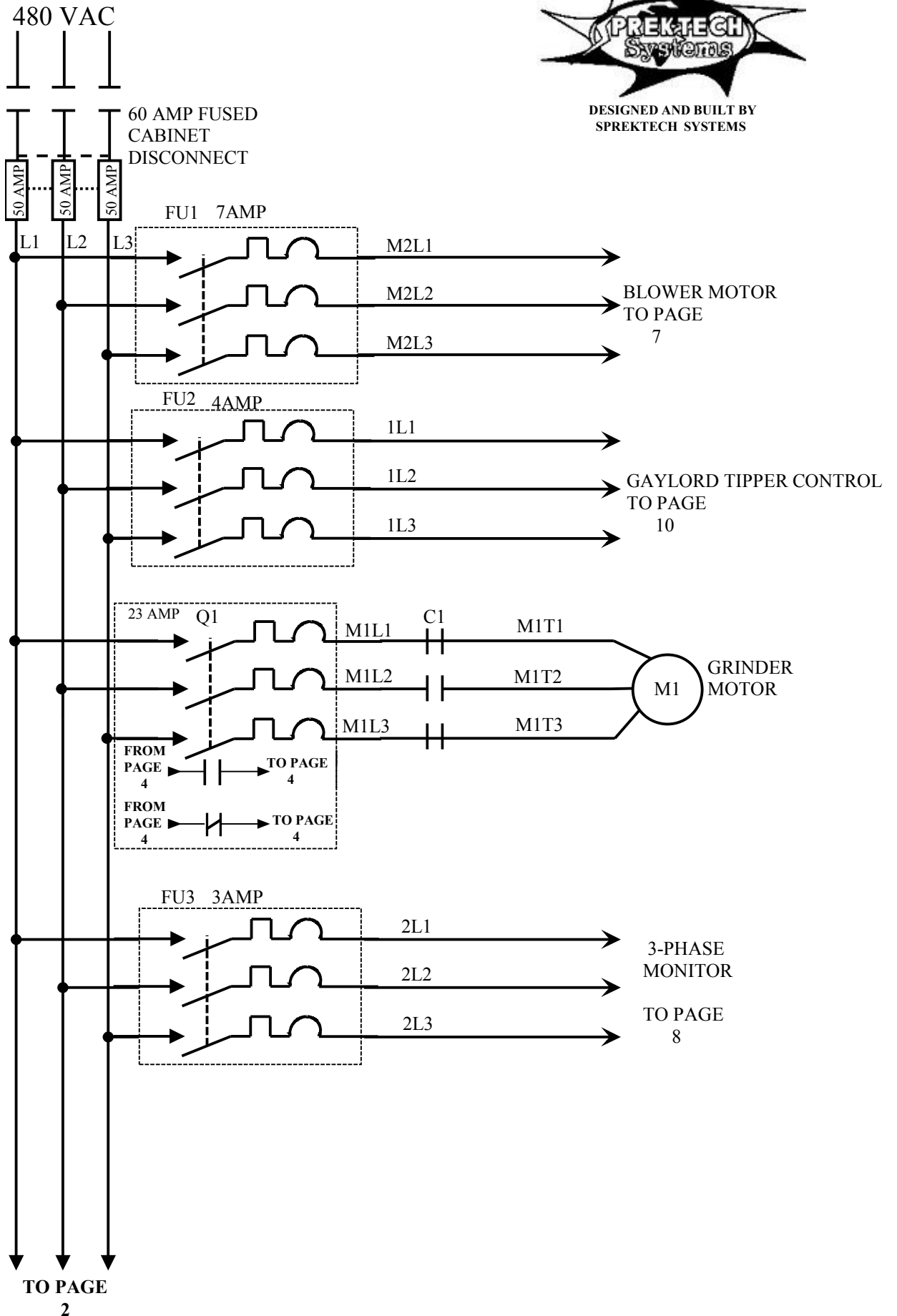


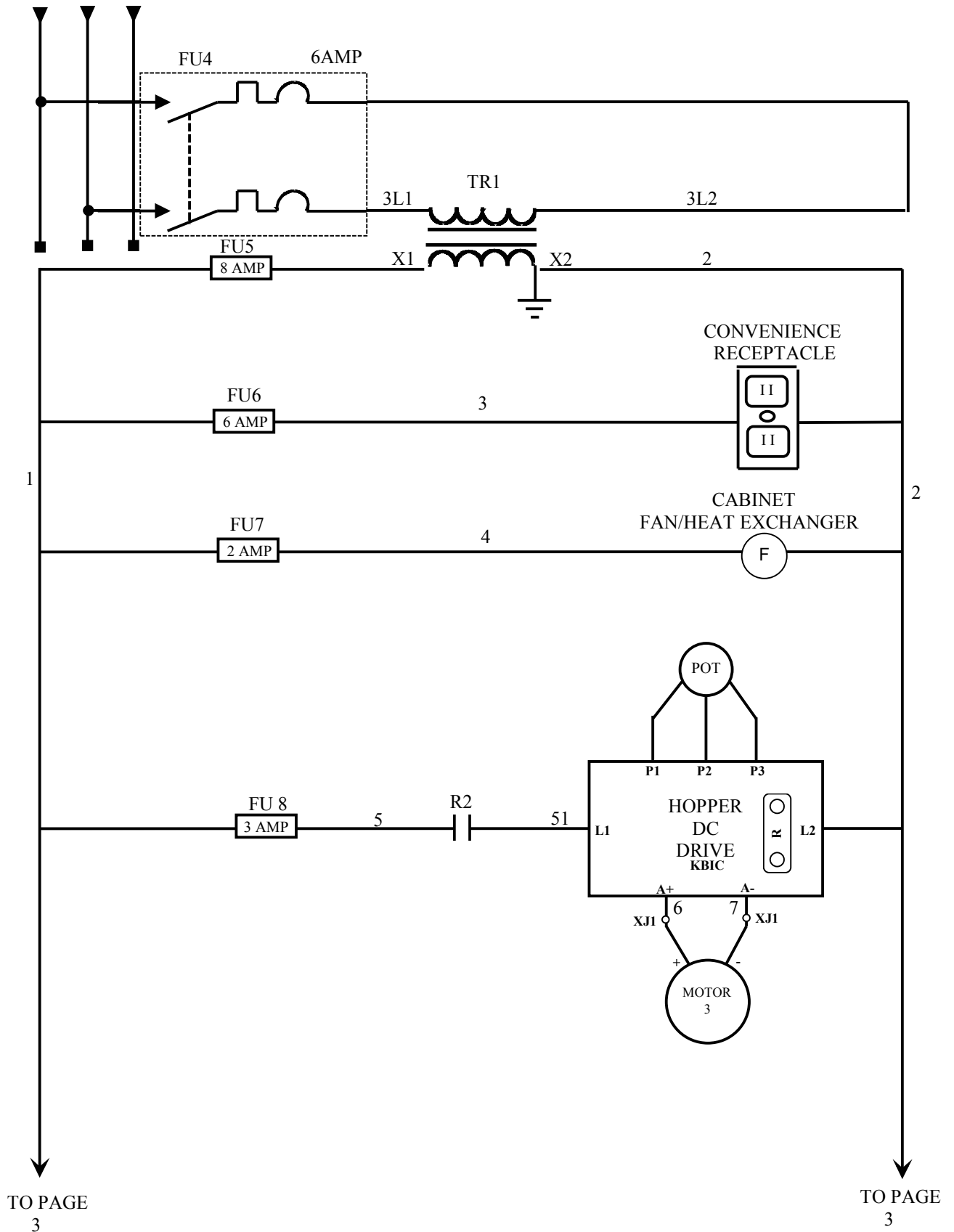


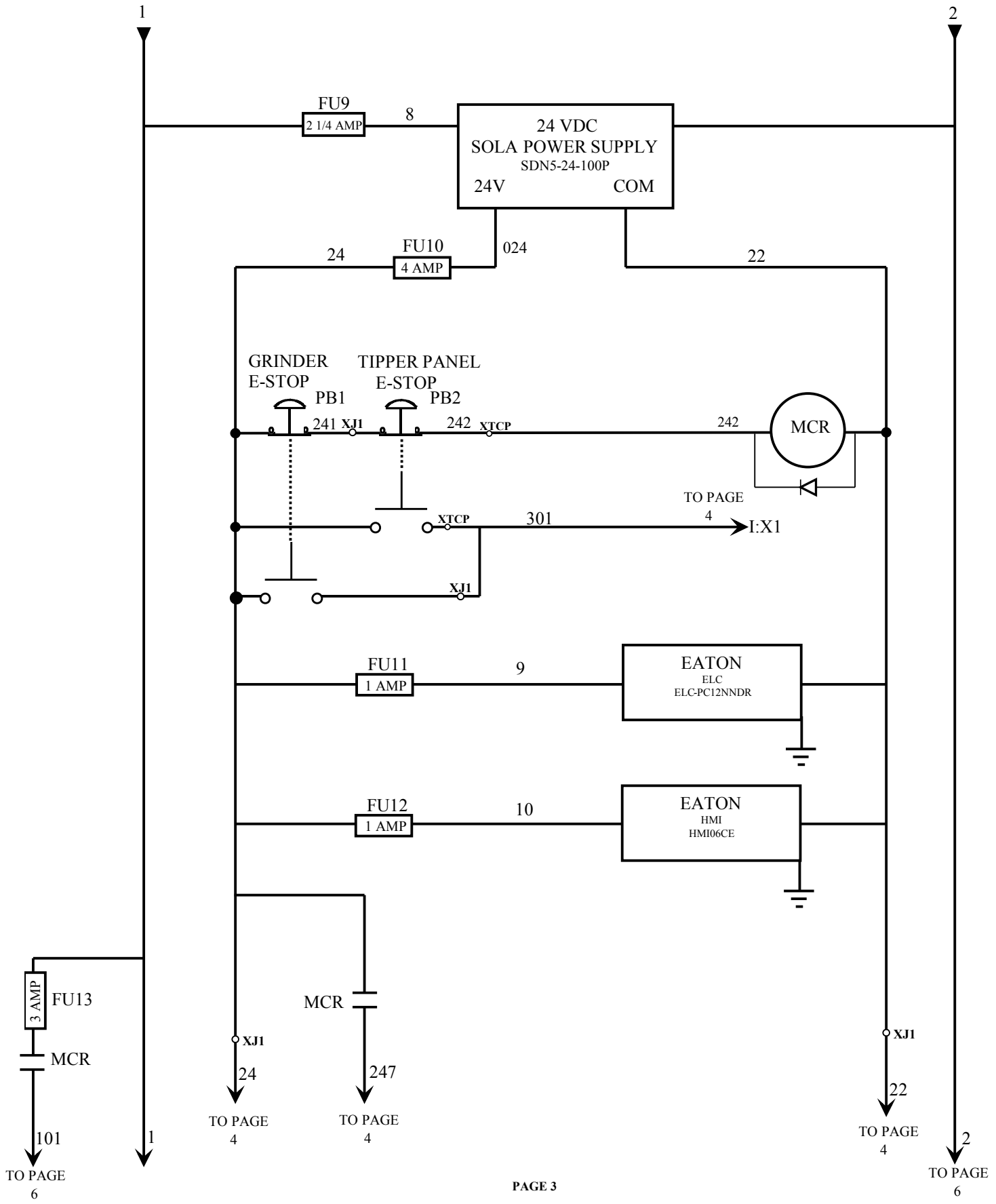
DESIGNED AND BUILT BY
SPREKTECH SYSTEMS

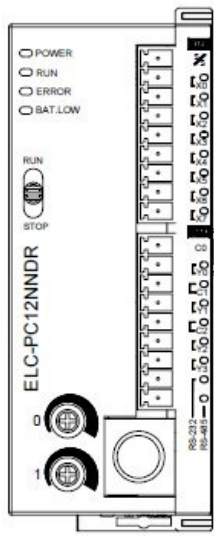
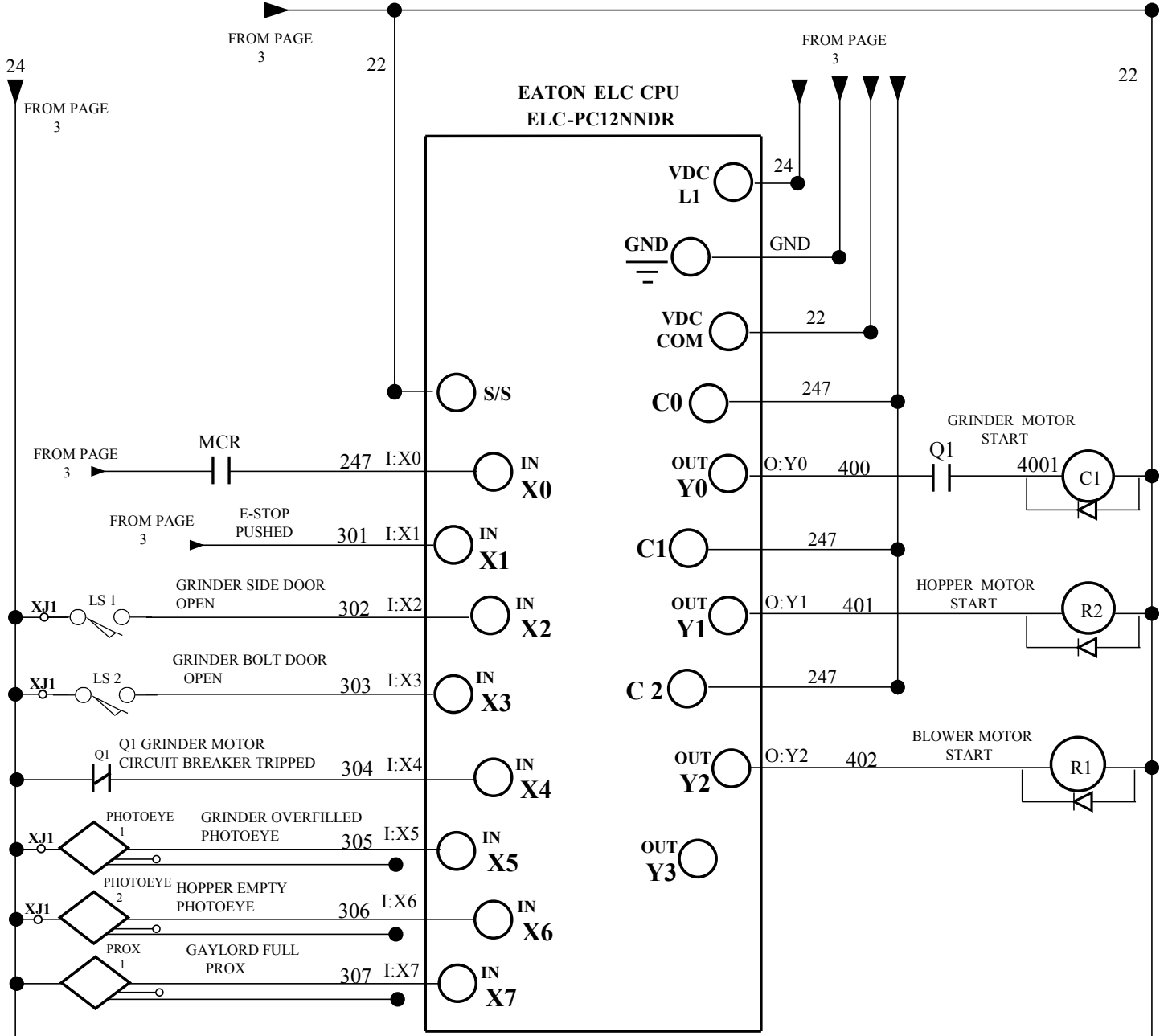


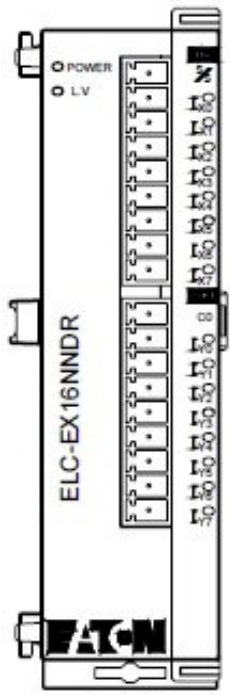
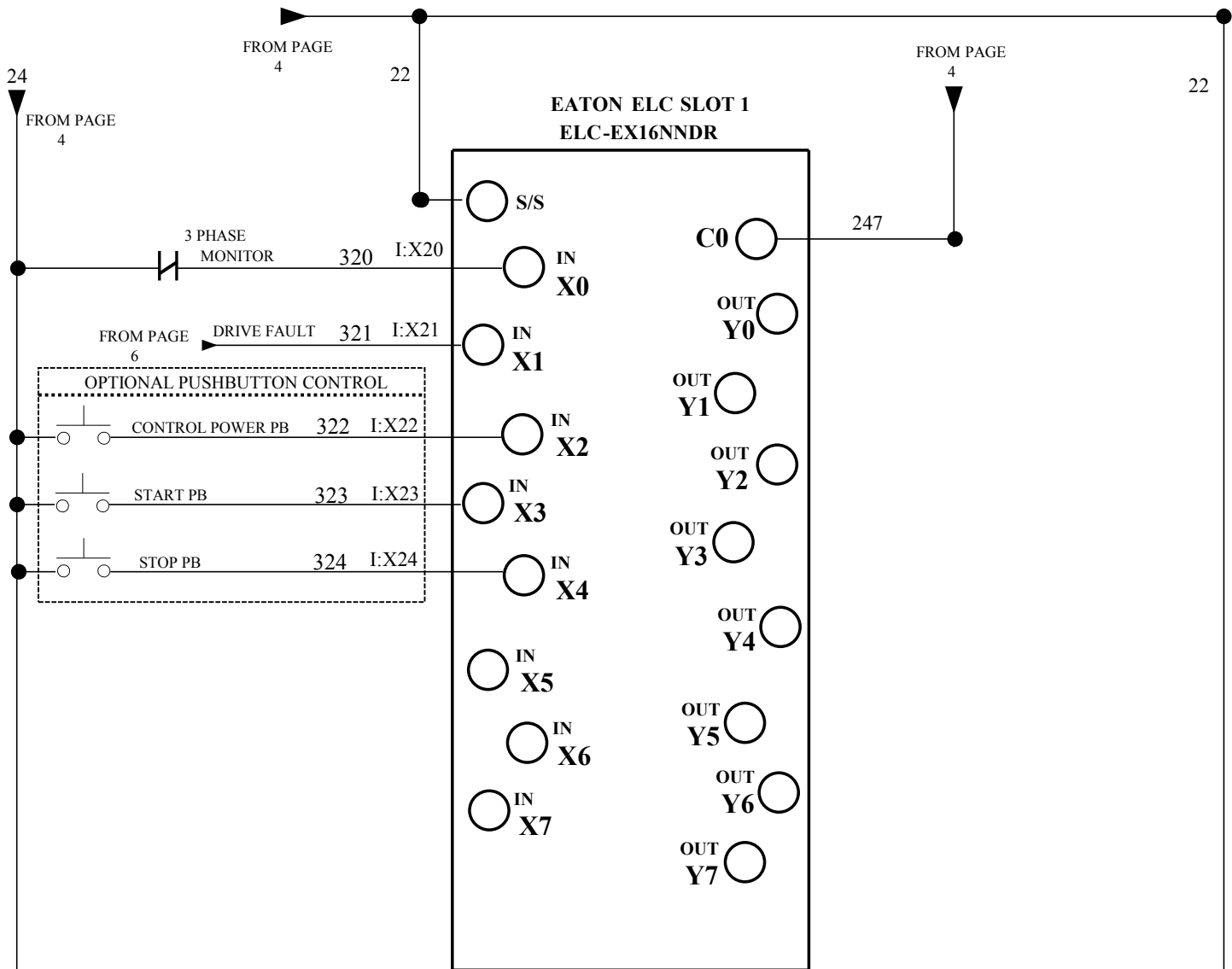
FROM PAGE

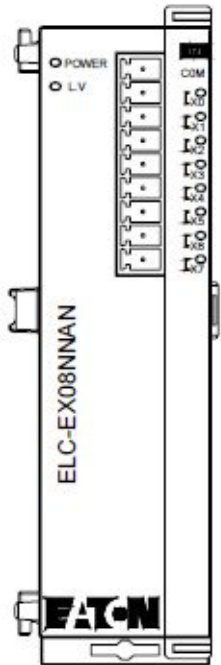
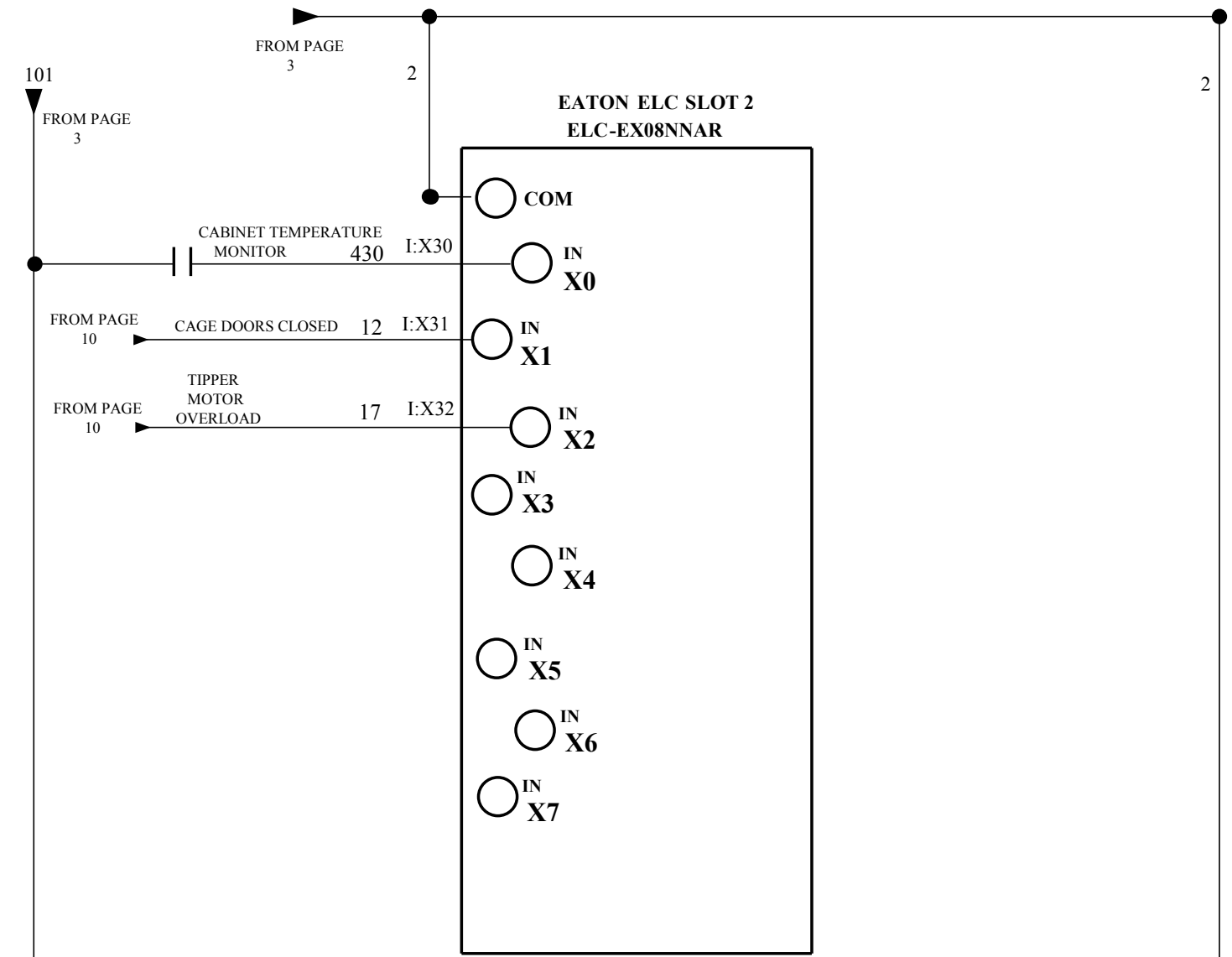
1











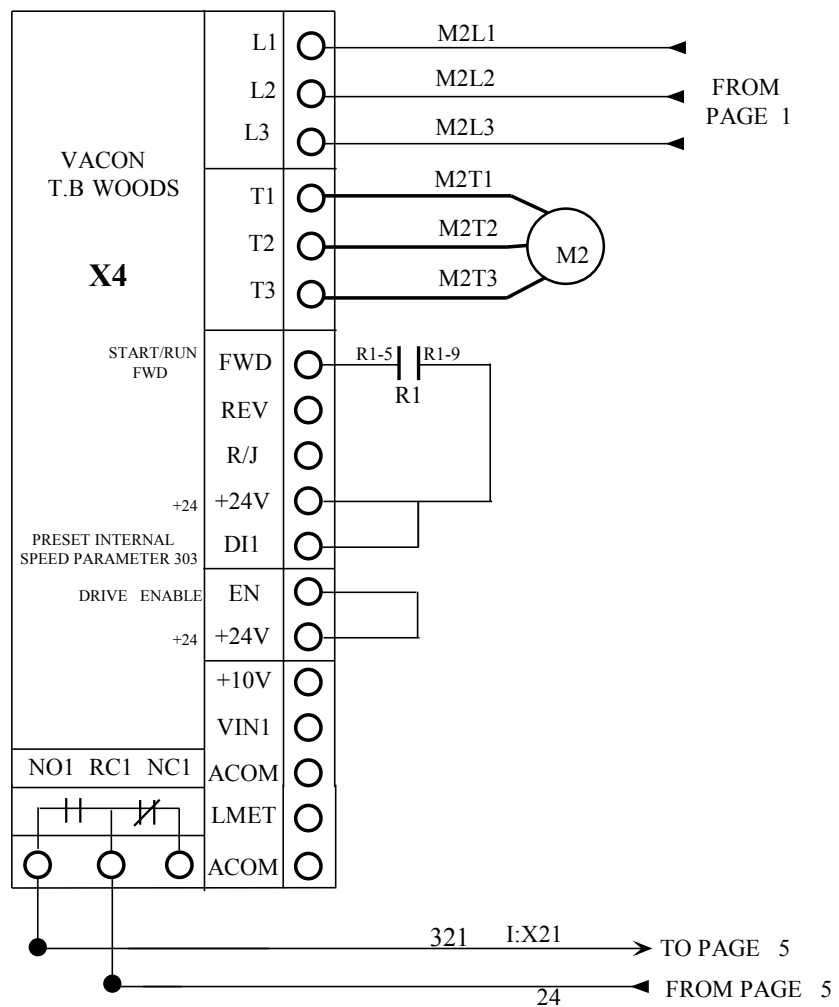
101
TO PAGE
10

2
TO PAGE
10

BLOWER MOTOR CONTROLS

BLOWER

X4C40050C



TO PROGRAM DRIVE
HOLD **PROG** AND **SHIFT** KEYS
SIMULTANEOUSLY

SCROLL TO PARAMETER
PRESS **SHIFT** TO SELECT
USE **ARROWS** TO CHANGE
PRESS **ENTER** KEY
TO APPLY

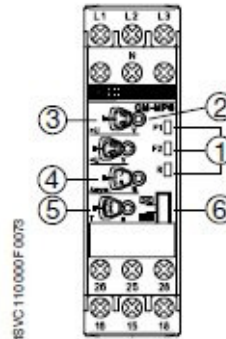
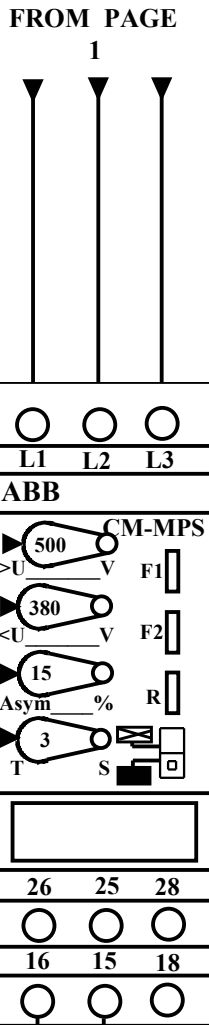
SETTINGS NEEDED CHANGED OTHER
THAN DEFAULT
201=REMOTE ONLY
303=30HZ
510=5.9
511=3450
811=10

TO RESTORE DRIVE TO DEFAULTS
CHANGE PARAMETER
490= FACTORY

**PASSWORD TO ACCESS DRIVE
PARAMETER 811=10**

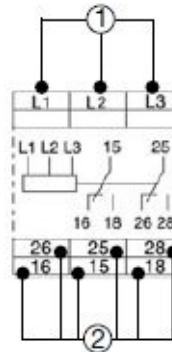
DRIVE INFORMATION PARAMETERS
VIEW ONLY
001=MODEL NUMBER
010=LAST FAULT
102=OUTPUT FREQUENCY
103=OUTPUT VOLTAGE
104=OUTPUT CURRENT
105=DRIVE LOAD
106=LOAD TORQUE
107=DRIVE TEMP
111=DC BUS VOLTAGE

3-PHASE MONITOR CONTROL



Front view with operating elements

- 1.) Status display
 - R: LED green – supply voltage, state of relay
 - F1: LED red – fault message
 - F2: LED red – fault message
- 2.) Setting threshold values for overvoltage
- 3.) Setting threshold values for undervoltage
- 4.) Setting threshold values for phase unbalance (2-15%)
- 5.) Fine adjustment of delay time (0.1-10 s)
- 6.) Switchover ON- () / OFF- () delay



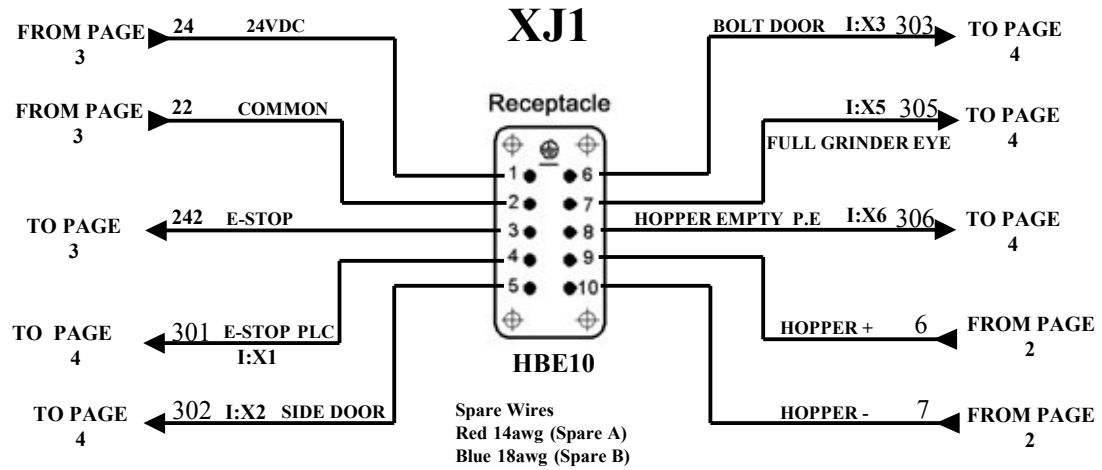
Wiring diagrams

- 1.) L1, L2, L3---3-phase supply voltage
- 2.) 15-16/18 ---- output contacts----- 25-26/28

Fault messages

- Overvoltage : F1 on
- Undervoltage : F2 on
- Unbalance: F1 and F2 on
- Phase loss: F1 on, F2 flashing
- Phase sequence: F1 and F2 alternately flashing

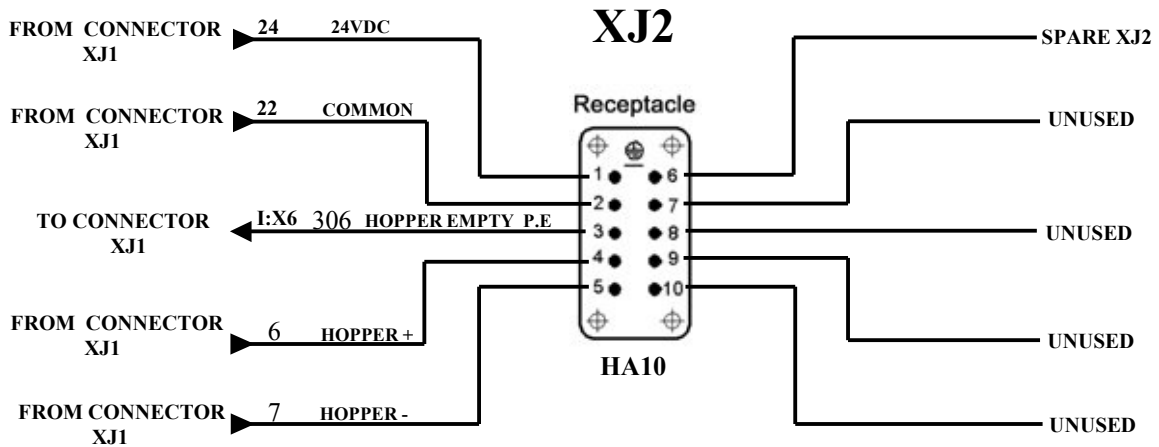
GRINDER INTERFACE



*XJ1 CONNECTOR FEEDS XJ2 CONNECTOR IN GRINDER CABINET

HOPPER INTERFACE

*LOCATED ON GRINDER SIDE DOOR



XCC

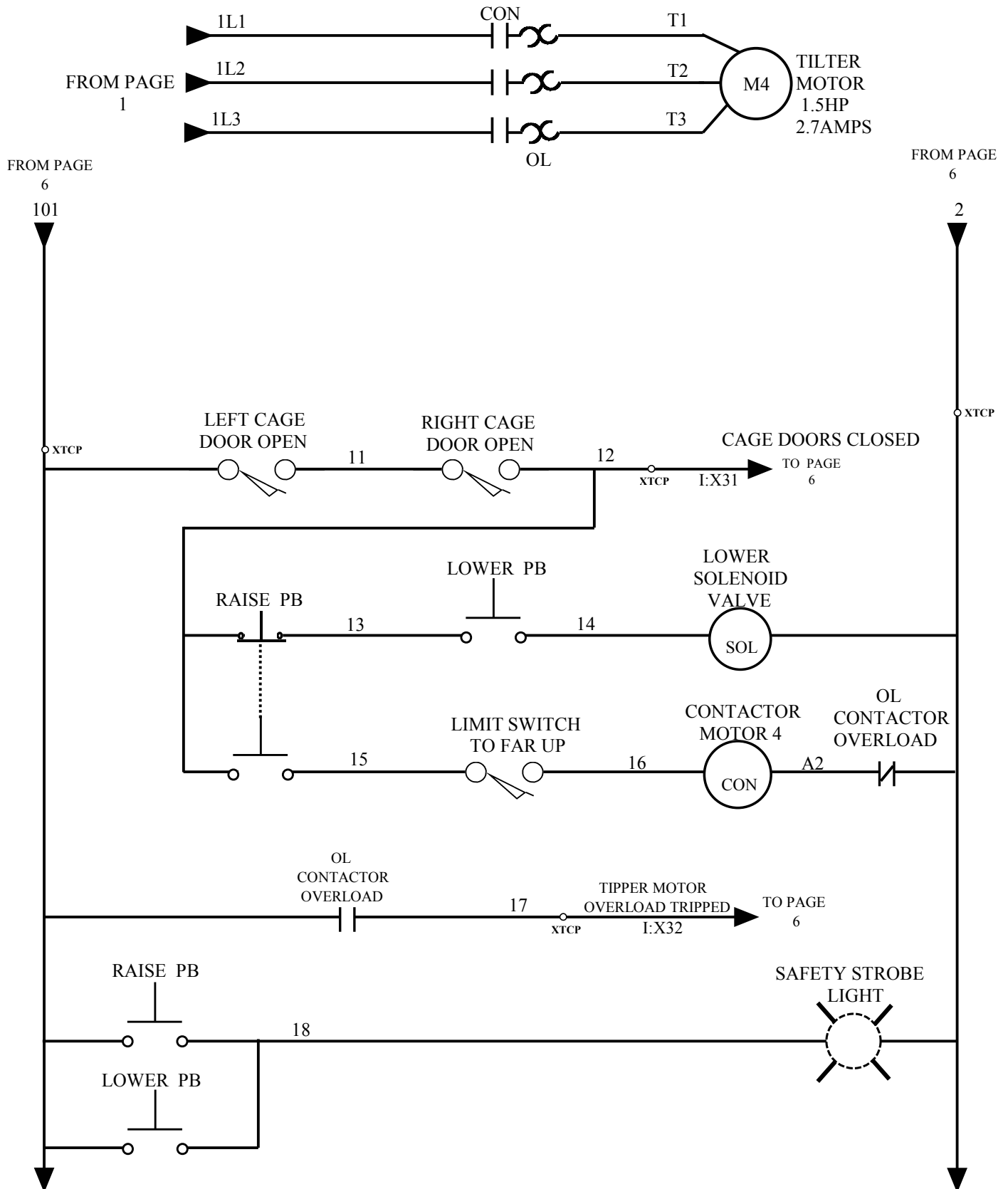
Cyclone Cabinet

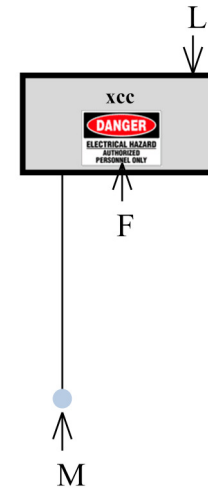
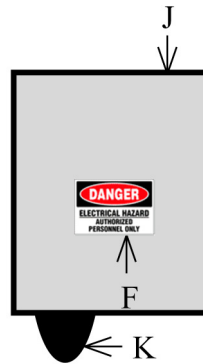
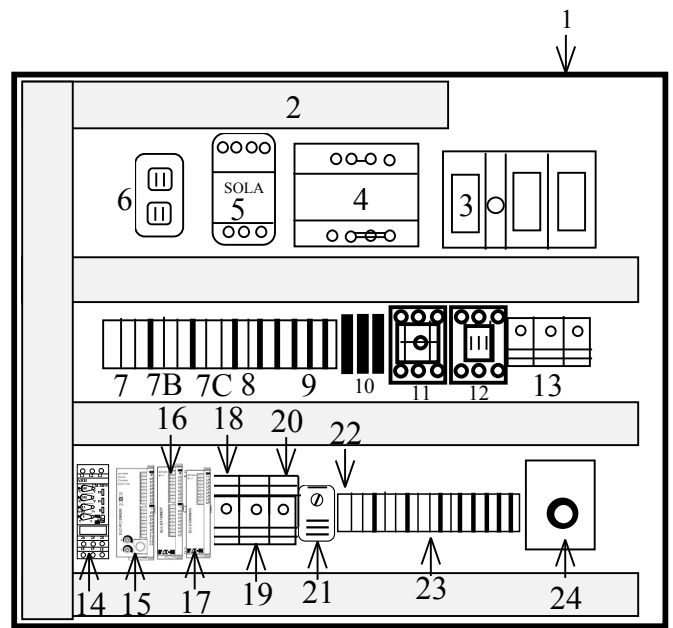
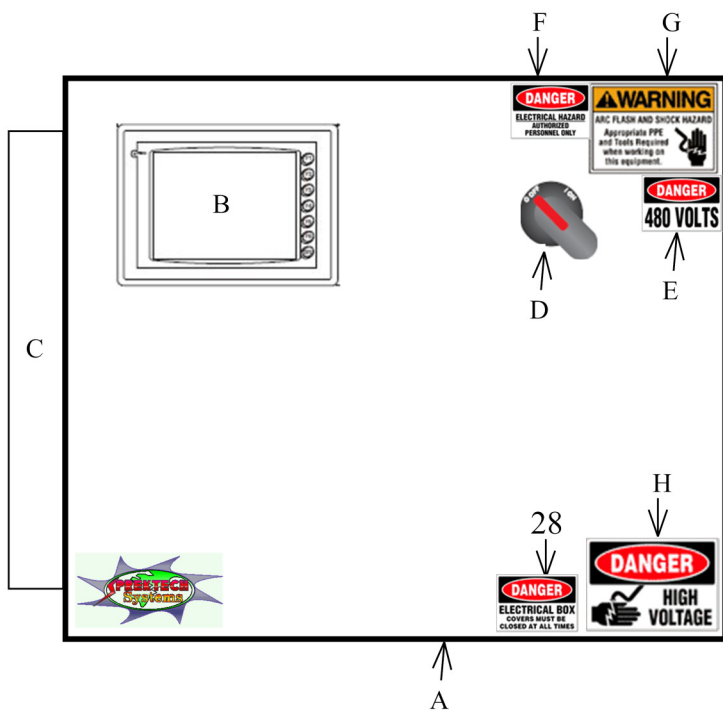
*LOCATED ON CYCLONE FRAME

Spare Wires
Blue 18awg (Spare XCC)

GAYLORD TIPPER CONTROLS

*CIRCUIT LOCATED IN TIPPER PUSH BUTTON PANEL INDICATED BY XTCP ON PRINT





- | GRINDER EXTRAS | |
|--------------------|-------------------|
| 25 | EMERGENCY STOP PB |
| 26 | XJ2 COMPONENTS |
| TIPPER CAGE EXTRAS | |
| 27 | STROBE LIGHT |



Location	Description / part number	Supplier
A	HOFFMAN ENCLOSURE CSD242410LG	SPRINGFIELD
	HOFFMAN DATA STORAGE POCKET ADP1	SPRINGFIELD
B	EATON TOUCH SCREEN HMI08CE	BODINE
	EATON RS232 INTERFACE CABLE ELC-CBPCELC1	BODINE
C	HOFFMAN HEAT EXCHANGER/FAN XR200416012	SPRINGFIELD
D	ABB DISCONNECT HANDLE OHB65J6	BODINE
	ABB DISCONNECT SHAFT OXP6X210	BODINE
E	ELECTRICAL SAFETY SIGN SQS116	EMEDCO
F	ELECTRICAL SAFETY SIGN SQS105	EMEDCO
G	ELECTRICAL SAFETY SIGN QS3743	EMEDCO
H	ELECTRICAL SAFETY SIGN SQS30	EMEDCO
I	TB WOODS AC DRIVE X4C40050C	MOTION
J	HOFFMAN ENCLOSURE A1008CH	SPRINGFIELD
K	HUBBELL RECEPTACLE HBL2730	SPRINGFIELD
	HUBBELL PLUG HBL2731	SPRINGFIELD
L	HOFFMAN ENCLOSURE A604CH	SPRINGFIELD
M	SICK CAPACITIVE PHOTOEYE CM-30-25NPP-KC1 (6020477)	SPRINGFIELD
N	HBE10 LAPP EPIC FITTING HOOD BASE 10033900	SPRINGFIELD
	HBE10 LAPP EPIC FITTING HOOD 100429NP	SPRINGFIELD
	HBE10 LAPP EPIC FITTING PLUG 10192000	SPRINGFIELD
	HBE10 LAPP EPIC FITTING RECEPTACLE 10193000	SPRINGFIELD
1	HOFFMAN ENCLOSURE BACK PANEL CP2424	SPRINGFIELD
2	WIRE DUCT WHITE 1GUZ2	GRAINGER
	WIRE DUCT COVER WHITE 1RUR9	GRAINGER
3	ABB DISCONNECT OS60J12	BODINE
4	110VAC TRANSFORMER SOLA HEVI E1000	SPRINGFIELD
5	SOLA 24VDC POWER SUPPLY 3WY64	GRAINGER
6	HUBBELL RECEPTACLE DRUB15	SPRINGFIELD
7	SIEMENS CIRCUIT BREAKER 3RV1021-1HA10	ENGLEWOOD
7B	SIEMENS CIRCUIT BREAKER 3RV1021-1FA10	ENGLEWOOD
7C	SIEMENS CIRCUIT BREAKER 3RV1021-1DA10	ENGLEWOOD
8	MERLIN GERLIN MG24520 6B120	GRAINGER
9	LITTLEFUSE SINGLE FUSE HOLDER LPSC001ID	BODINE
10	ALLEN BRADLEY FUSE HOLDER 1492-H5	KIRBY RISK
	ALLEN BRADLEY FUSE HOLDER END CAP 1492- N37	KIRBY RISK
	ALLEN BRADLEY FUSE HOLDER JUMPER 1492- N49	KIRBY RISK
	ALLEN BRADLEY FUSE HOLDER MARKER 1492- MS8X12	KIRBYRISK
11	SIEMENS CIRCUIT BREAKER 3VU1600-1MP00	ENGLEWOOD
	SIEMENS AUXILIARY CONTACT BLOCK 3RV1901-1E	ENGLEWOOD
12	SIEMENS CONTACTOR 3RT1035-1CB00	ENGLEWOOD
	SIEMENS SURGE SUPPRESSOR 3RT1936-1CB00	ENGLEWOOD
13	ABB 3 PHASE DISTRIBUTION BLOCK 35620926	BODINE
14	ABB 3 PHASE MONITOR 1SVR430884R3300	BODINE
15	EATON ELC PLC CPU ELC-PC12NNDR	BODINE
16	EATON ELC PLC I/O CARD DC ELC-EX16NNDR	BODINE
17	EATON ELC PLC I/O CARD AC ELC-EX08NNAN	BODINE
18	ALLEN BRADLEY RELAY 2-POLE 700- HC22Z24	KIRBY RISK

